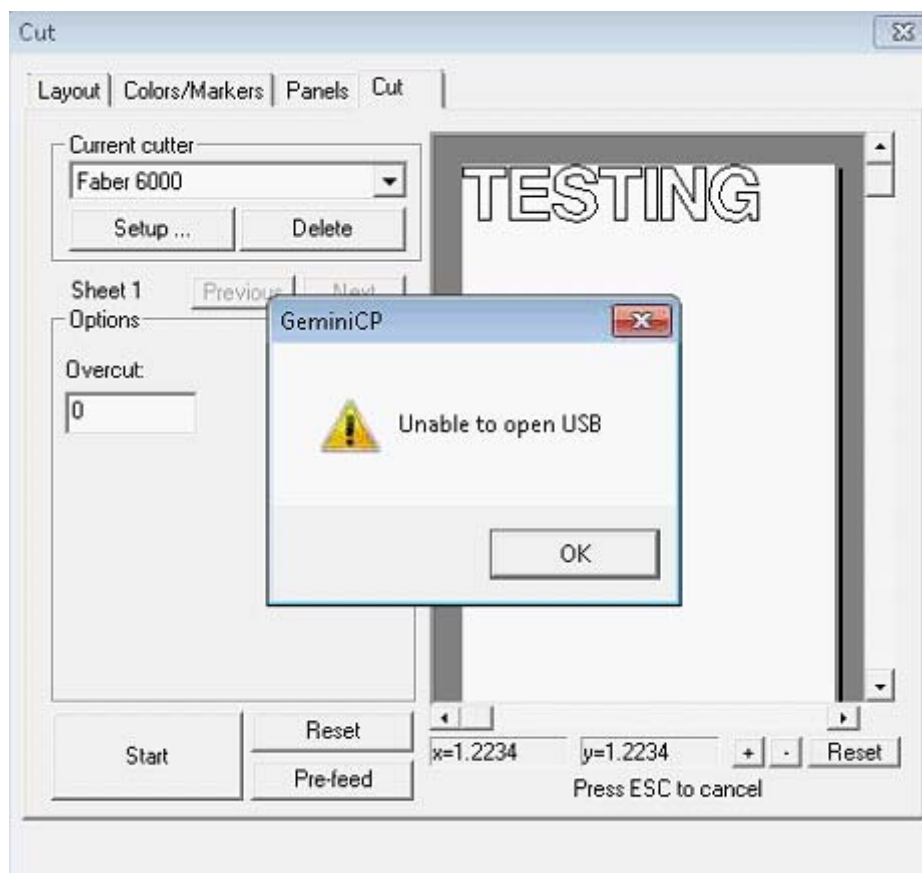


Faber 6000/Faber 6000 Plus USB Driver Installation for Windows 7/10

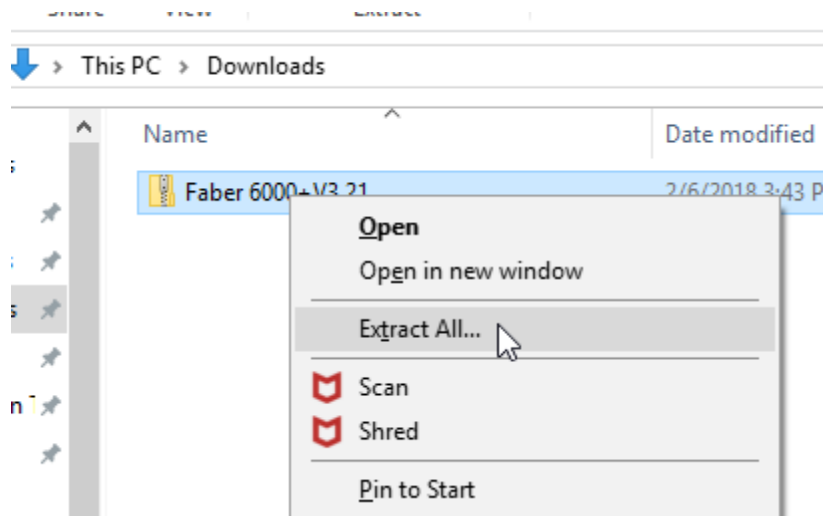
This guide covers multiple scenarios and only a subset of this guide will affect each user depending on the plotter version and the version of Windows on the PC. This step-by-step walkthrough explains how to install the USB driver for the Faber 6000 and Faber 6000 Plus plotters for both Windows 7 and Windows 10.

It's usually, but not always necessary to download the driver. The zipped driver file is available on [our website](#). Admin privilege is always necessary to install software and access the Device Manager. Please contact the IT department for this. If the plotter is listed in the Device Manager as CE6000 and the PC has Windows 10, STOP! Before installing anything, send a test cut from Gemini CP to the plotter to test communication. Sometimes, it will communicate via USB Printing Support. If it works, no driver installation is needed. If the driver is needed, a USB error will be displayed. Always close out of Gemini CP and reboot the plotter after receiving this error.



File Download and Extraction

1. The driver is available at [this link](#). After downloading the file, navigate to the folder where the zip file is now located. Right-click the zipped folder and select **Extract All**.



2. Uncheck **Show extracted files when complete** and click **Extract**.

← Extract Compressed (Zipped) Folders

Select a Destination and Extract Files

Files will be extracted to this folder:

C:\Users\MIHSS USER\Downloads\Faber 6000+V3.21

Browse...

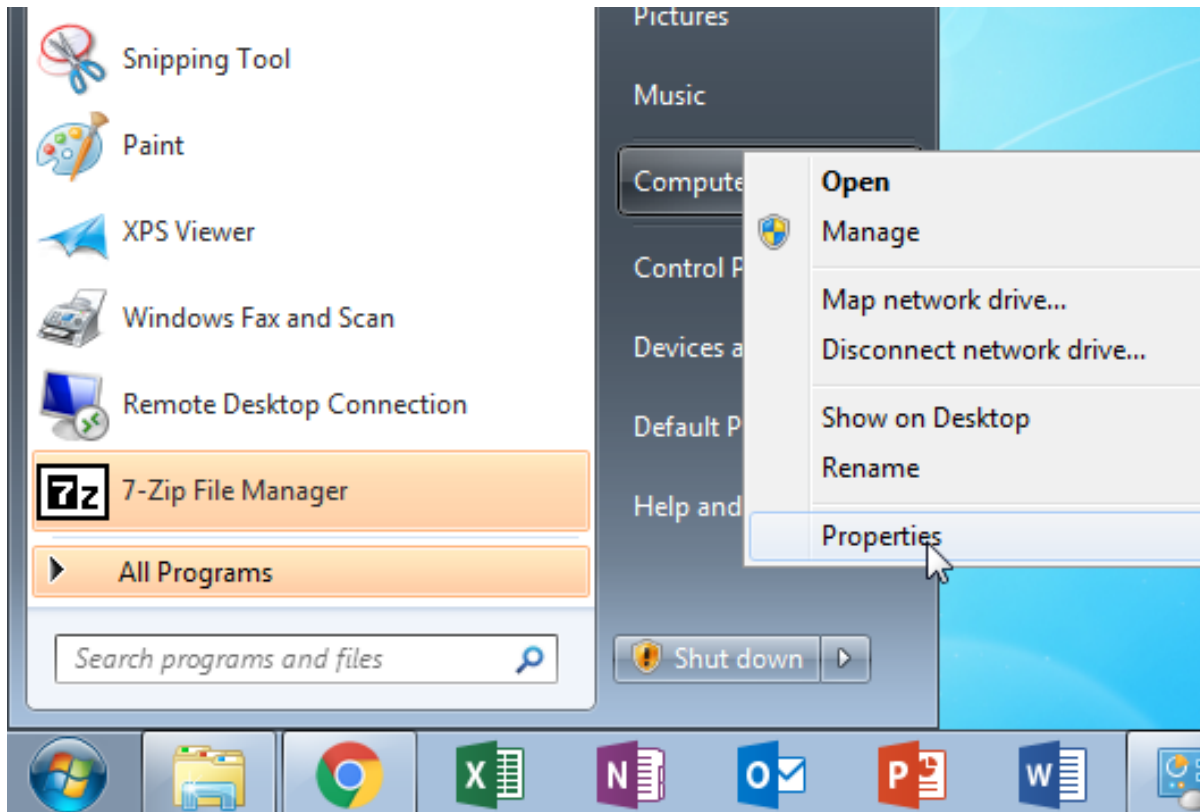
Show extracted files when complete

Extract

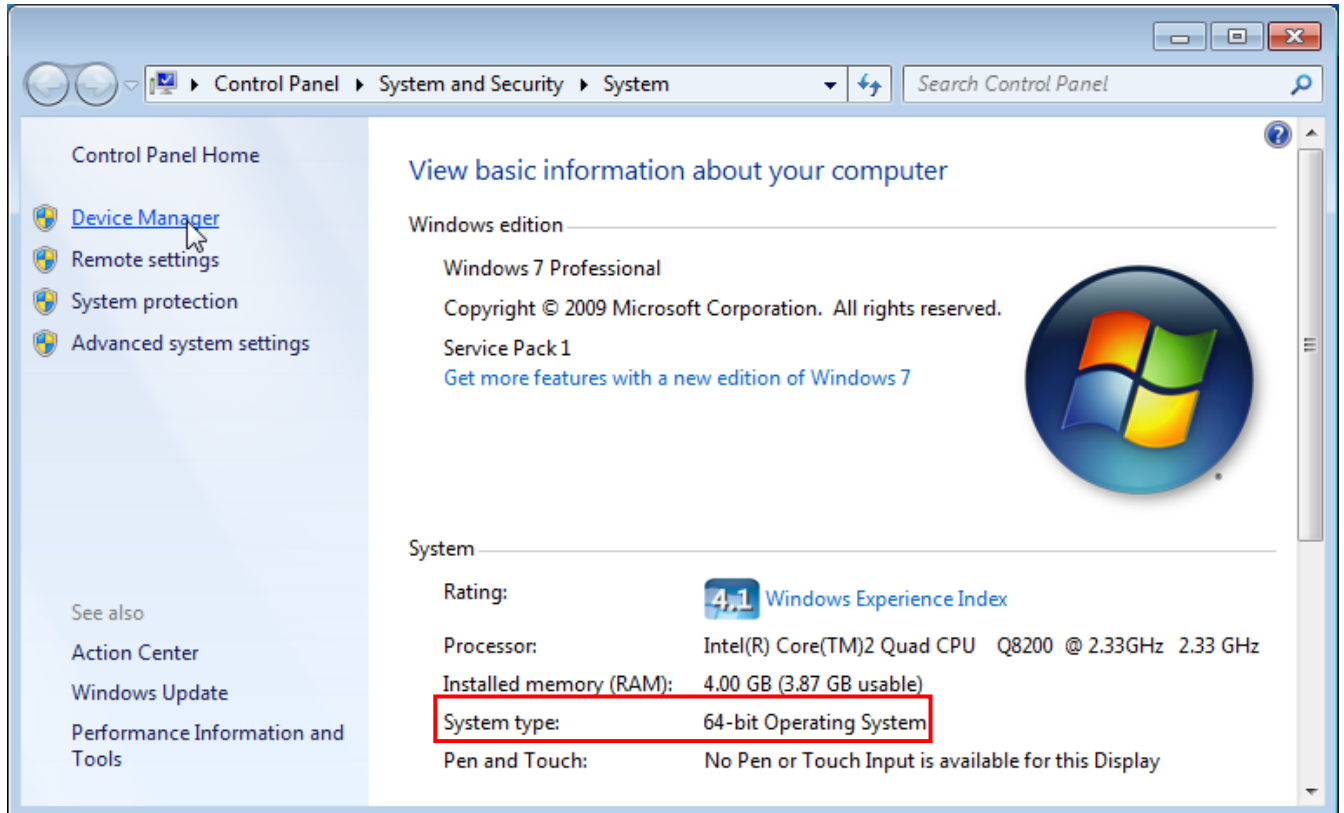
Cancel

Windows 7 - Driver Installation

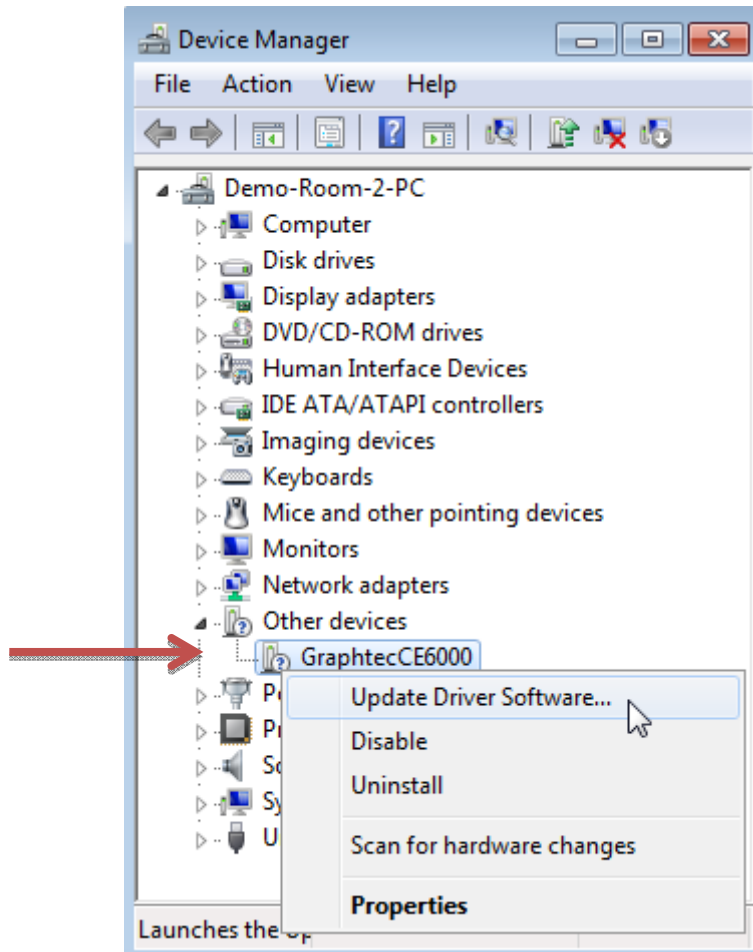
1. First, find out if the PC has Windows 7 32-bit or Windows 7 64-bit. Click the Windows Start icon in the bottom left-hand corner of the desktop. Then right-click where it displays **Computer** and select **Properties**.



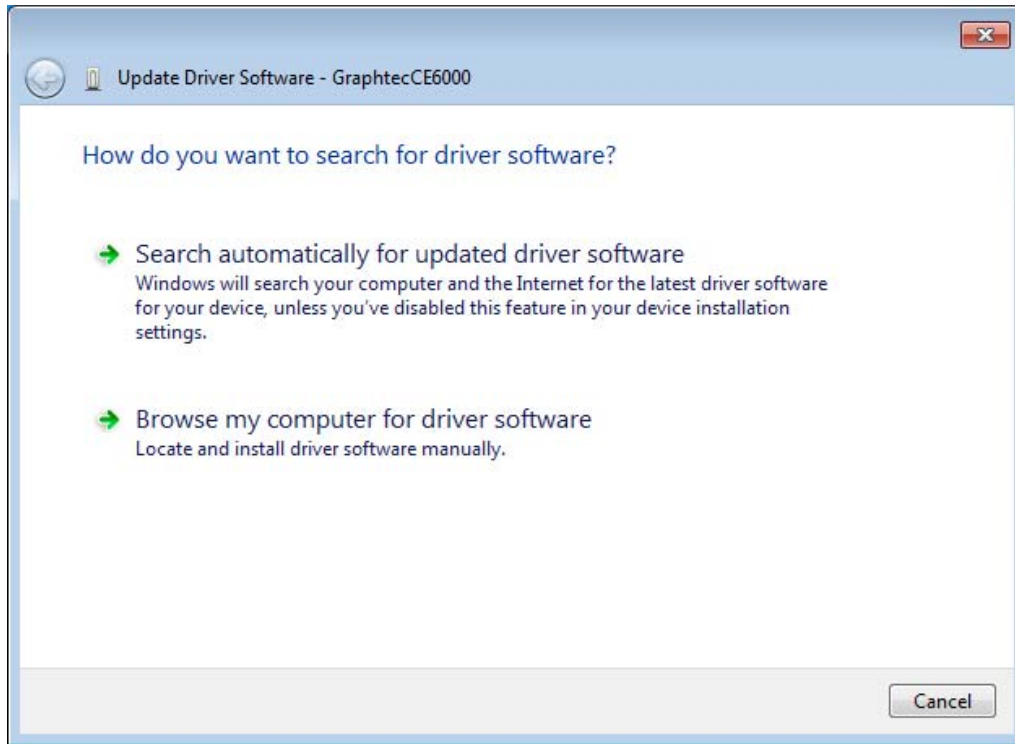
- Note the **System type** – either **32-bit** or **64-bit**. Next, click [Device Manager](#) on the pane on the left. The user must be logged in as an administrator to make changes. If not, Windows will display a warning that the user is logged in as a standard user.



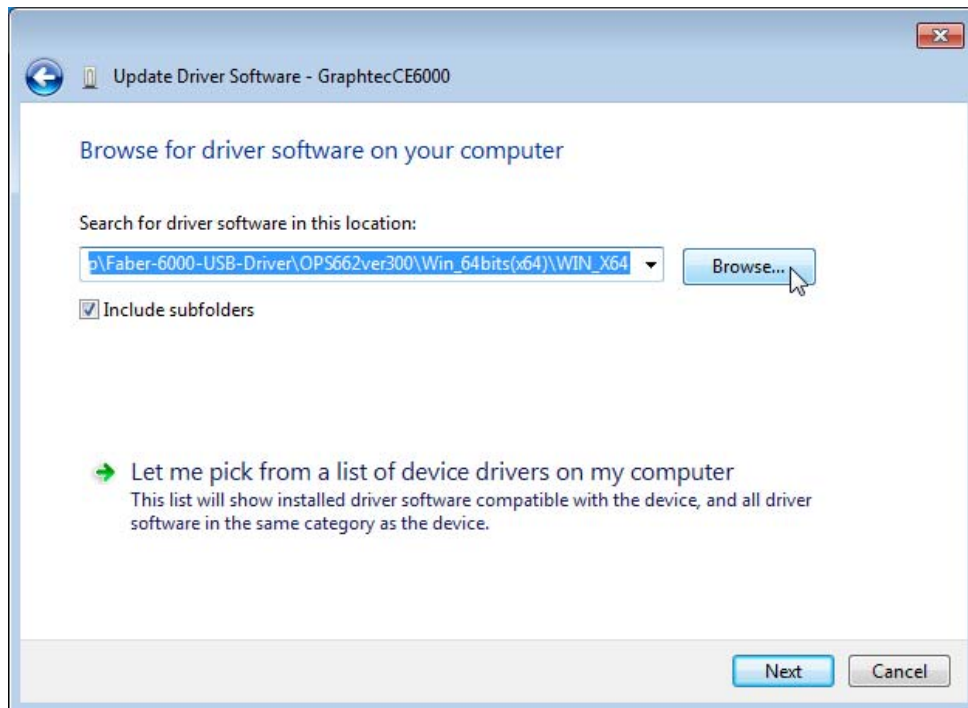
3. Locate Graphtec CE6000 under Other devices. Right-click the device and select **Update Driver Software**.



4. Click **Browse my computer for driver software**.



5. Click **Browse**.



6. Locate the folder where the files were extracted. Expand the Faber 6000 folder. Keep expanding down to the 32bits and 64bits folders to locate the appropriate driver folder and expand one level further down. Then click **OK**.

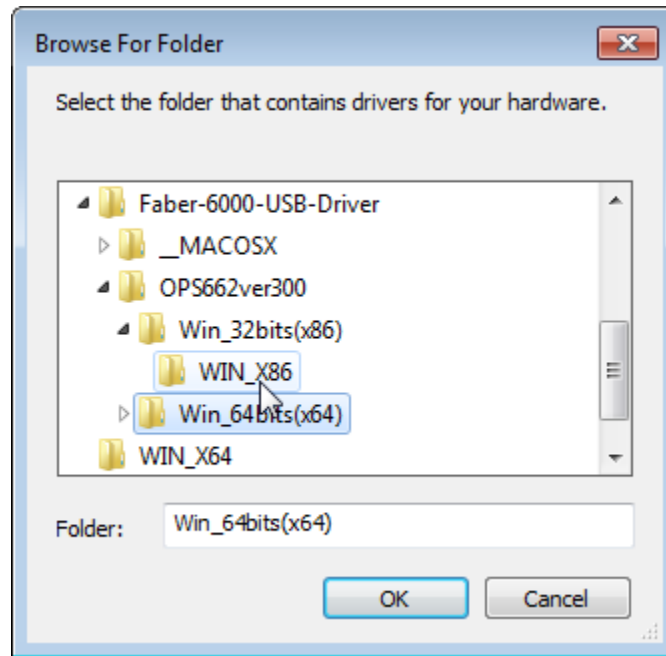


Figure 1 32-Bit

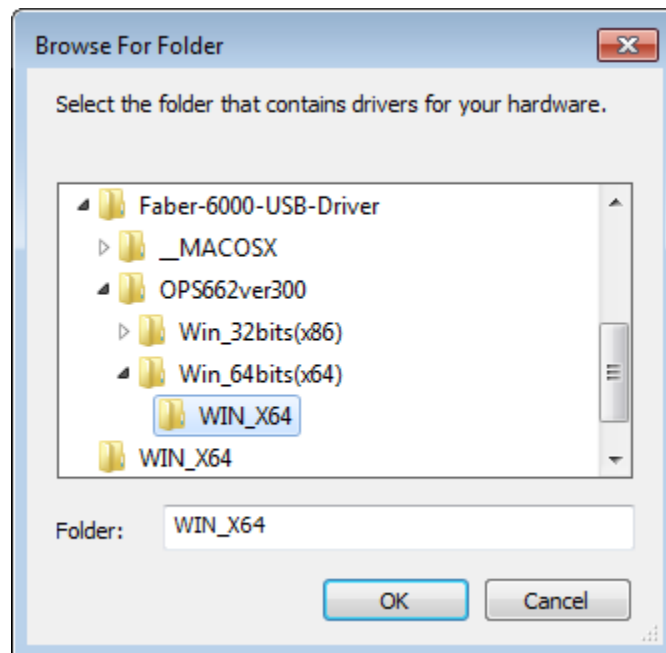
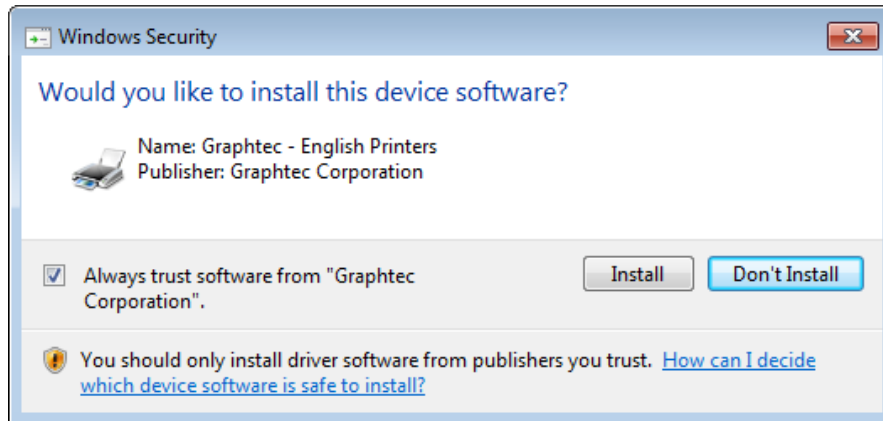
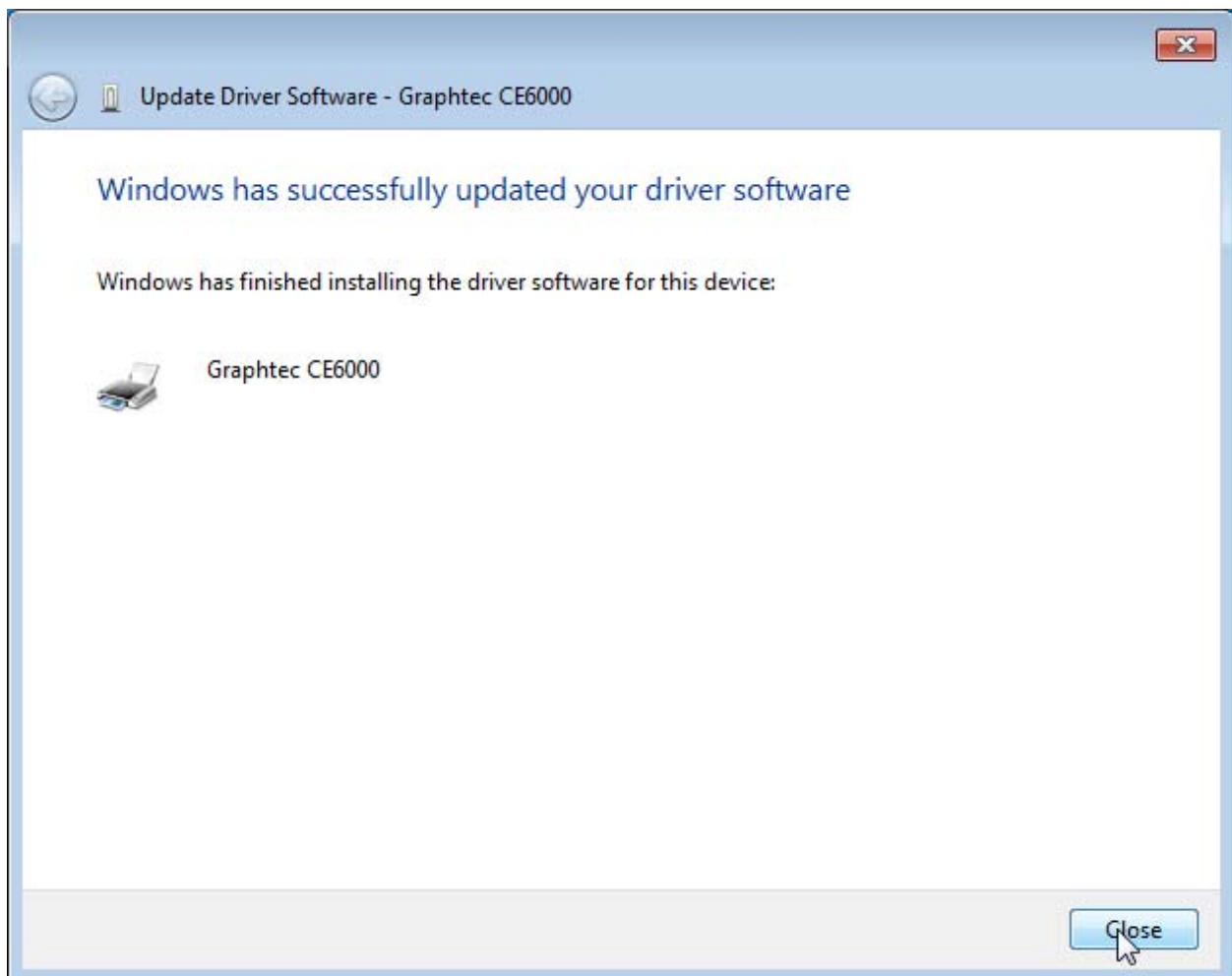


Figure 2 64-bit

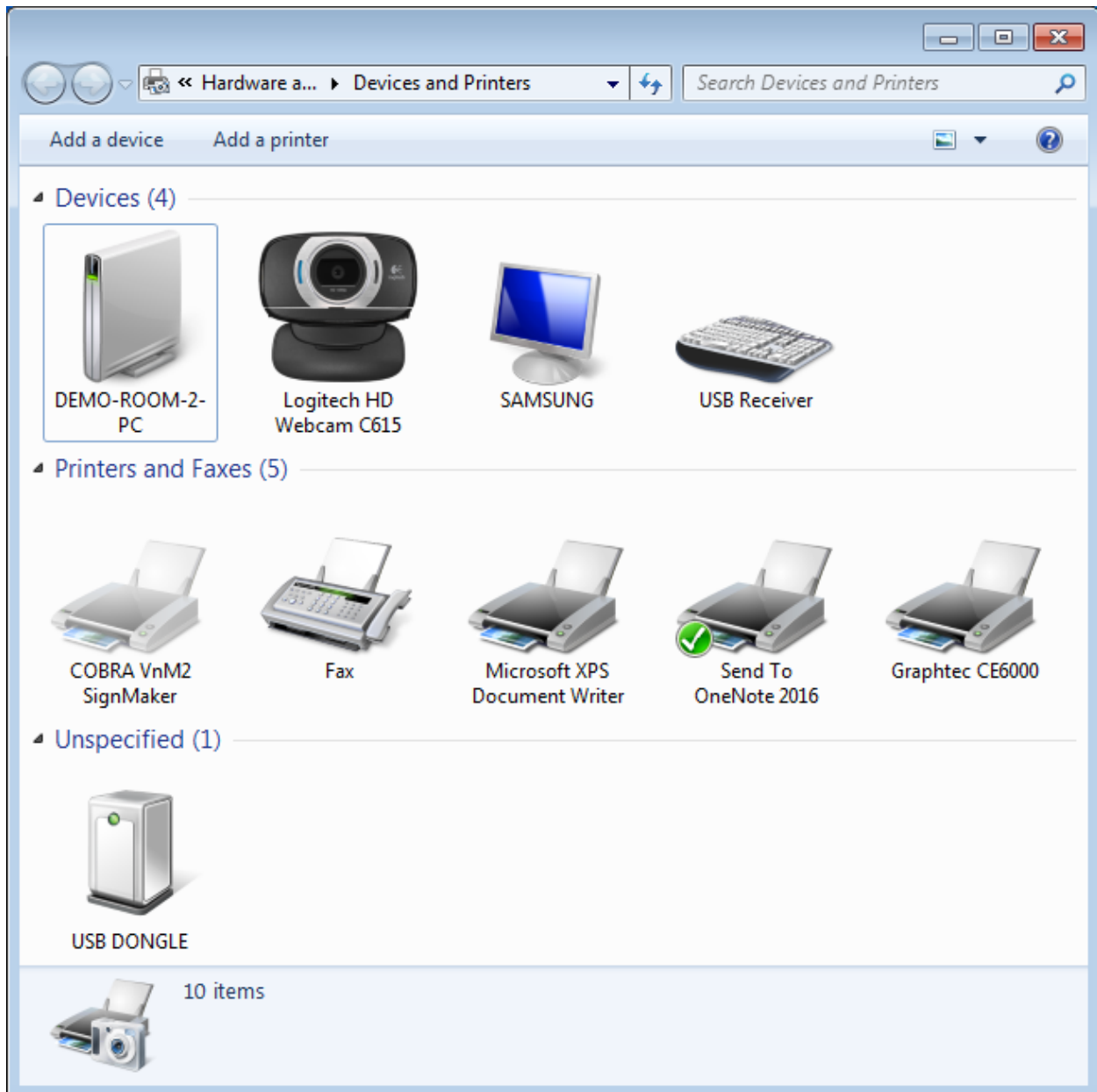
7. Click **Install**.



8. The driver is now successfully installed. Click **Close**.



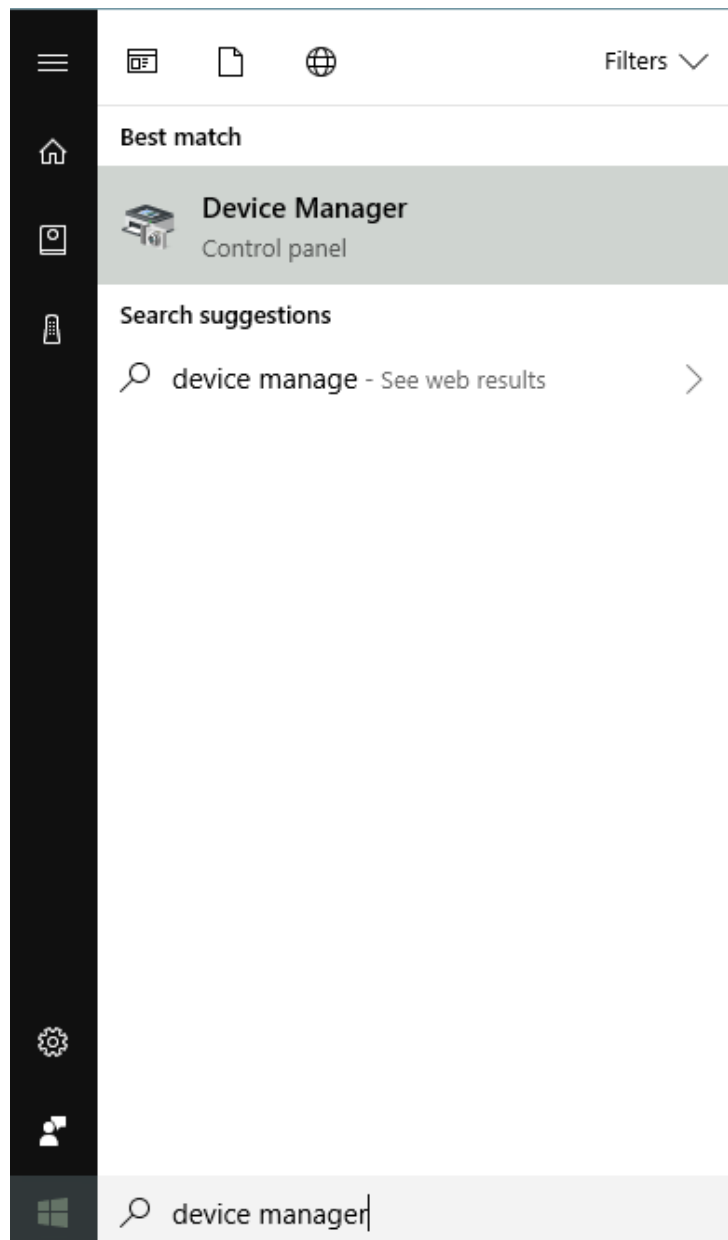
9. Now that the driver is installed, it will be listed in Devices and Printers.



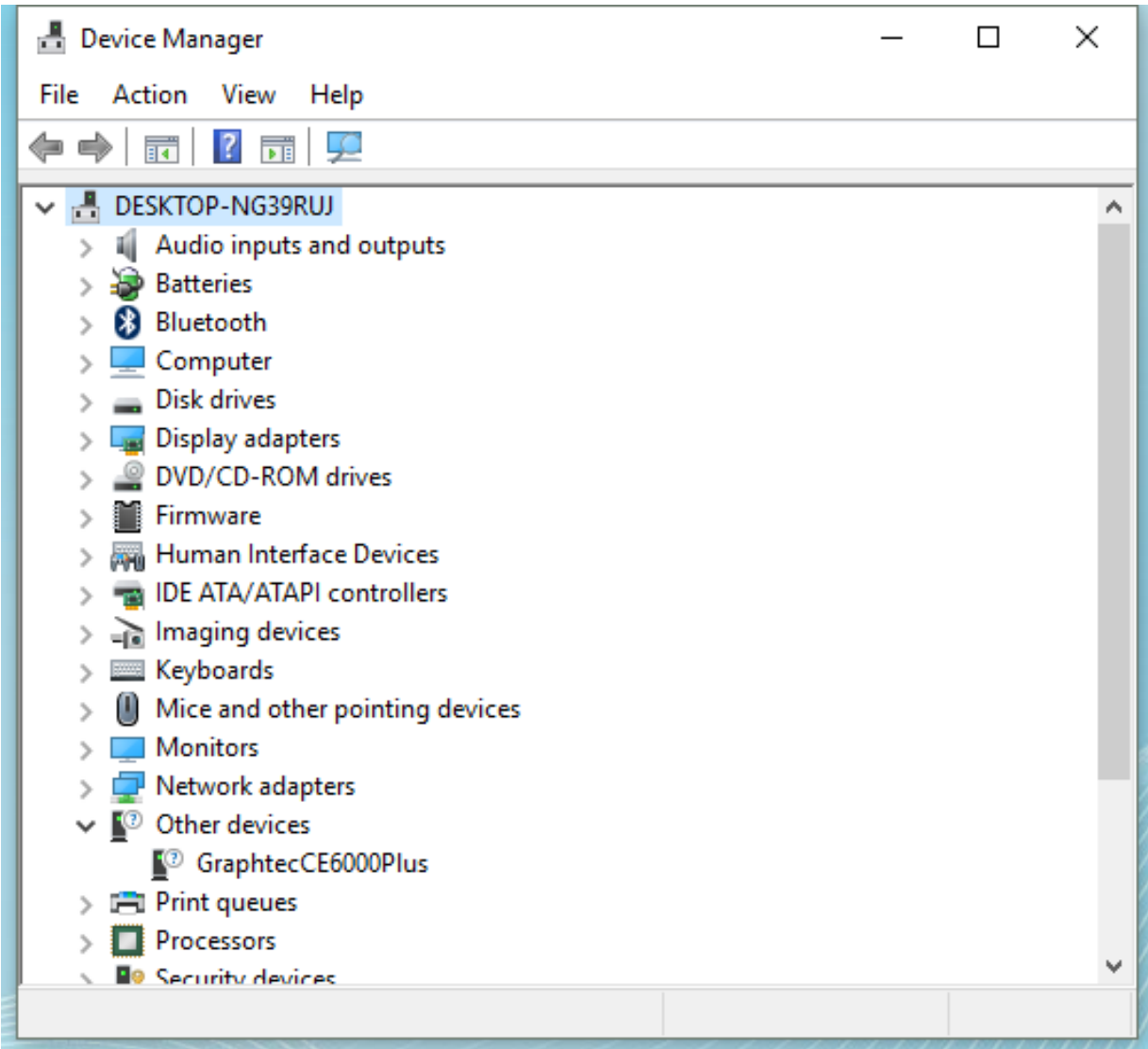
10. This is NOT the end of the work instruction, please scroll past the Windows 10 instructions to find the Cutter Configuration steps.

Windows 10 - Driver Installation

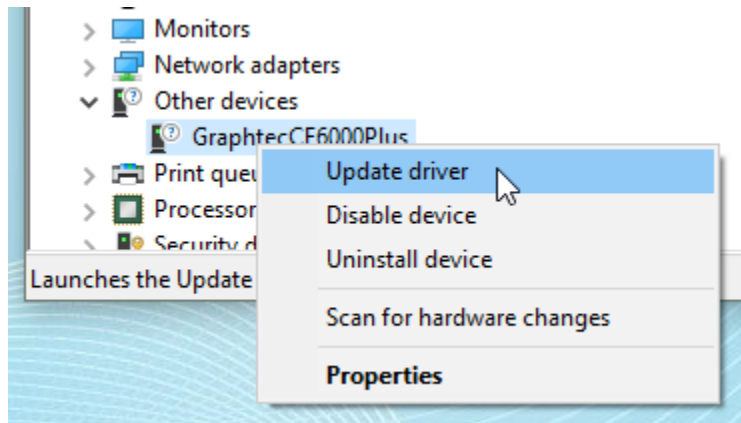
1. First, find out if the PC has Windows 10 32-bit or Windows 10 64-bit. Click the Windows Start icon in the bottom left-hand corner of the desktop. Then type **Control Panel** and select it from the search results. Next find and double-click **System**. This is different from the System Settings or System Information. Next access the **Device Manager**.



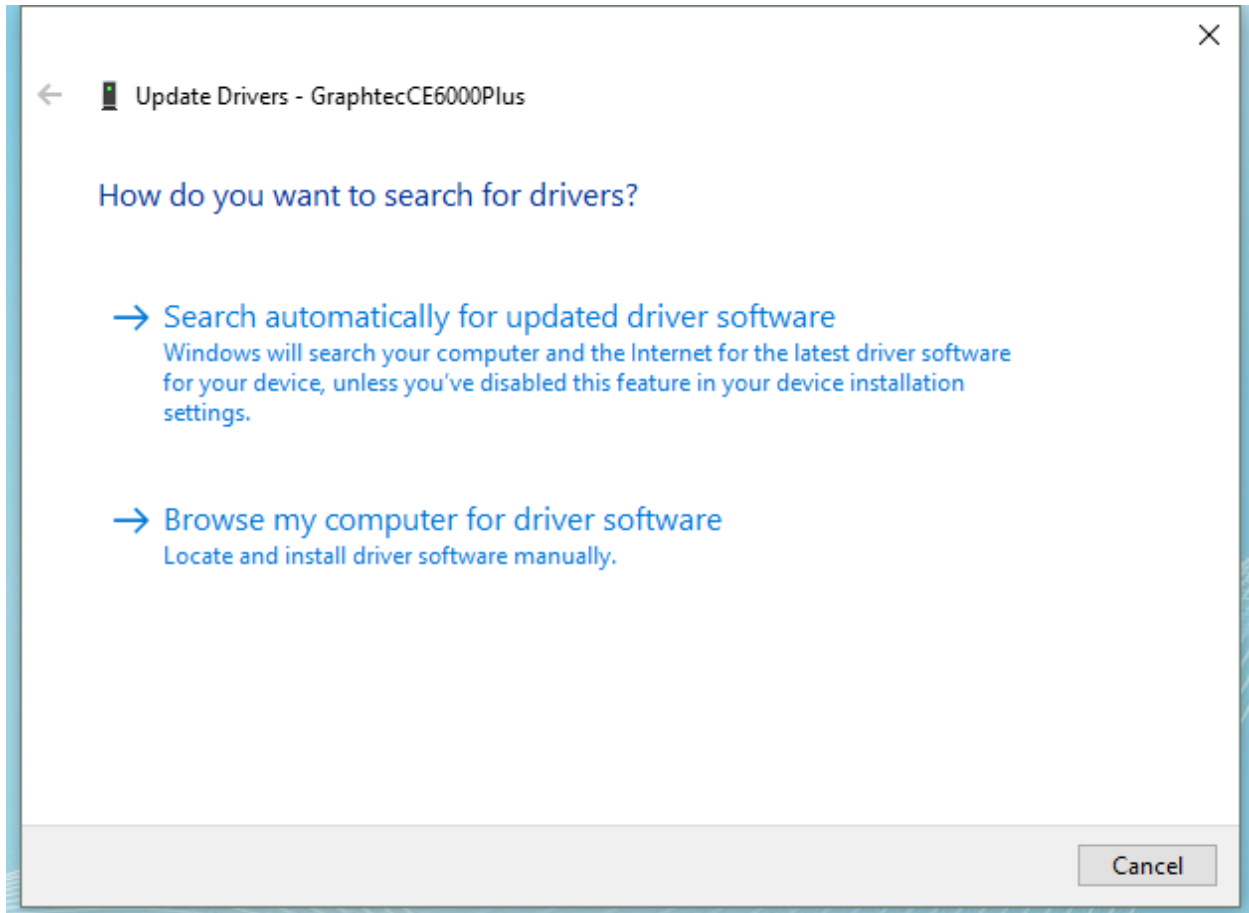
2. Turn the plotter on and verify that the USB cord is connected. Locate and expand Other devices. If this category is not visible, double-check that the plotter is connected securely.



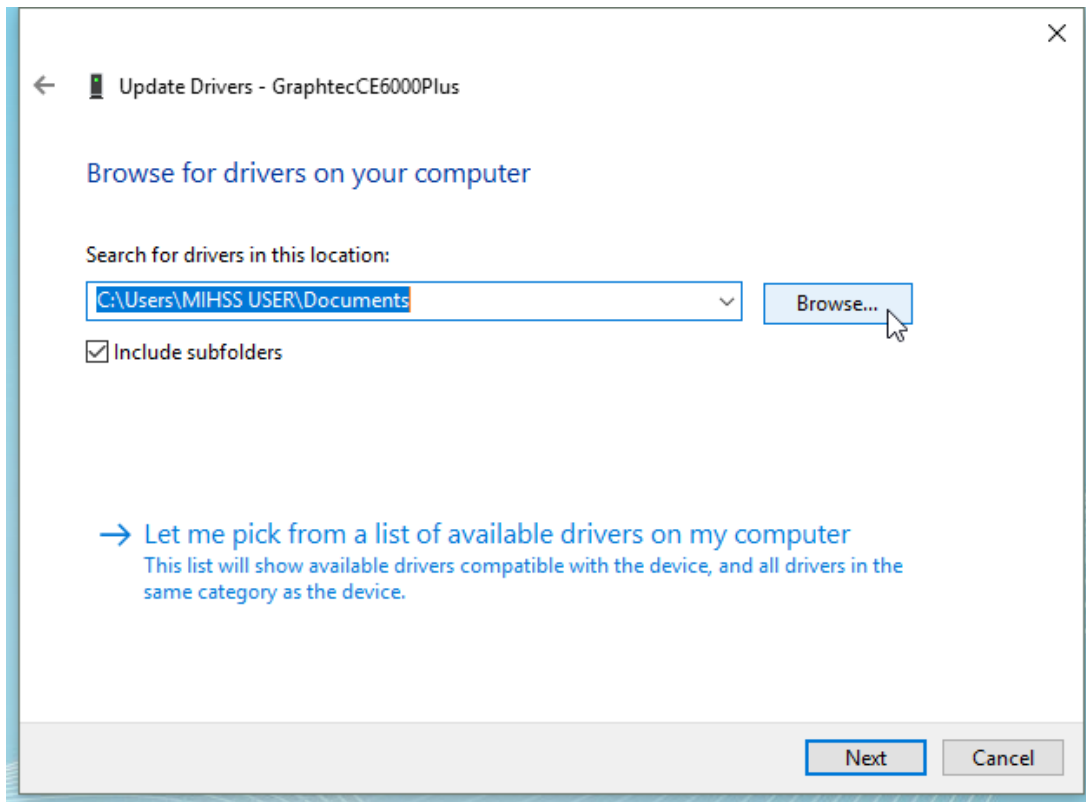
3. Right-click **GraphtecCE6000(Plus)** and click **Update driver**.



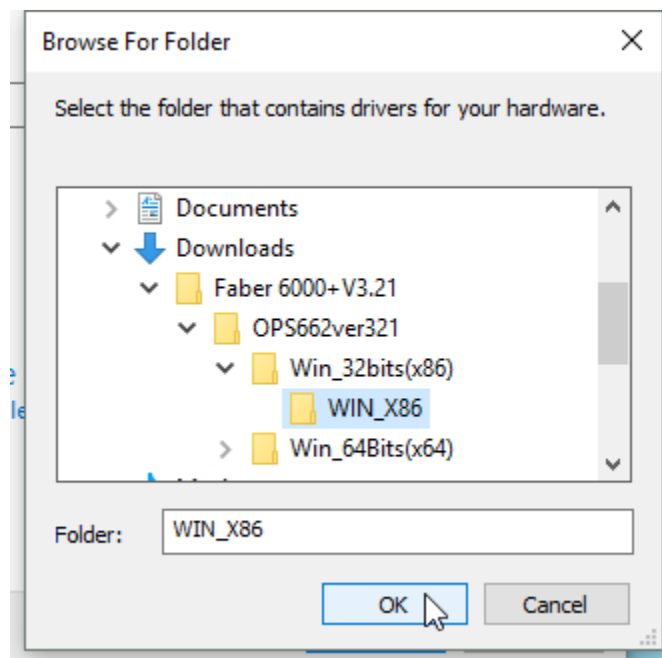
4. Then click **Browse my computer for driver software**



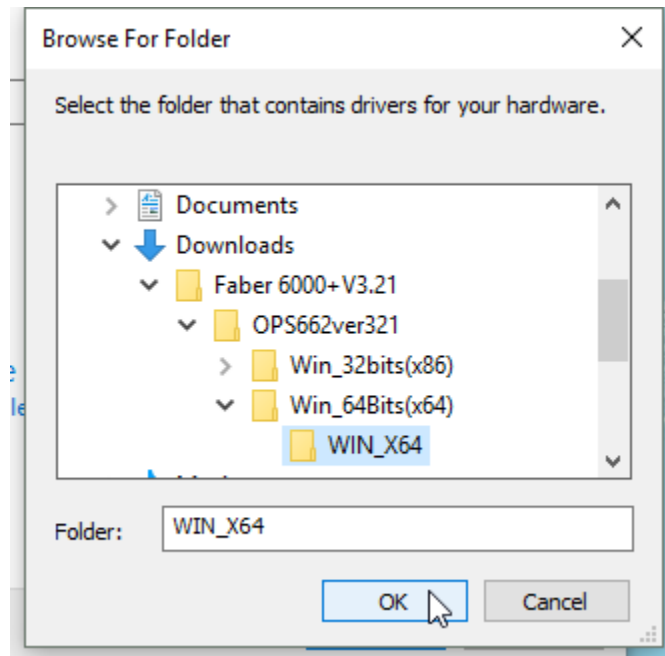
5. Click **Browse...**



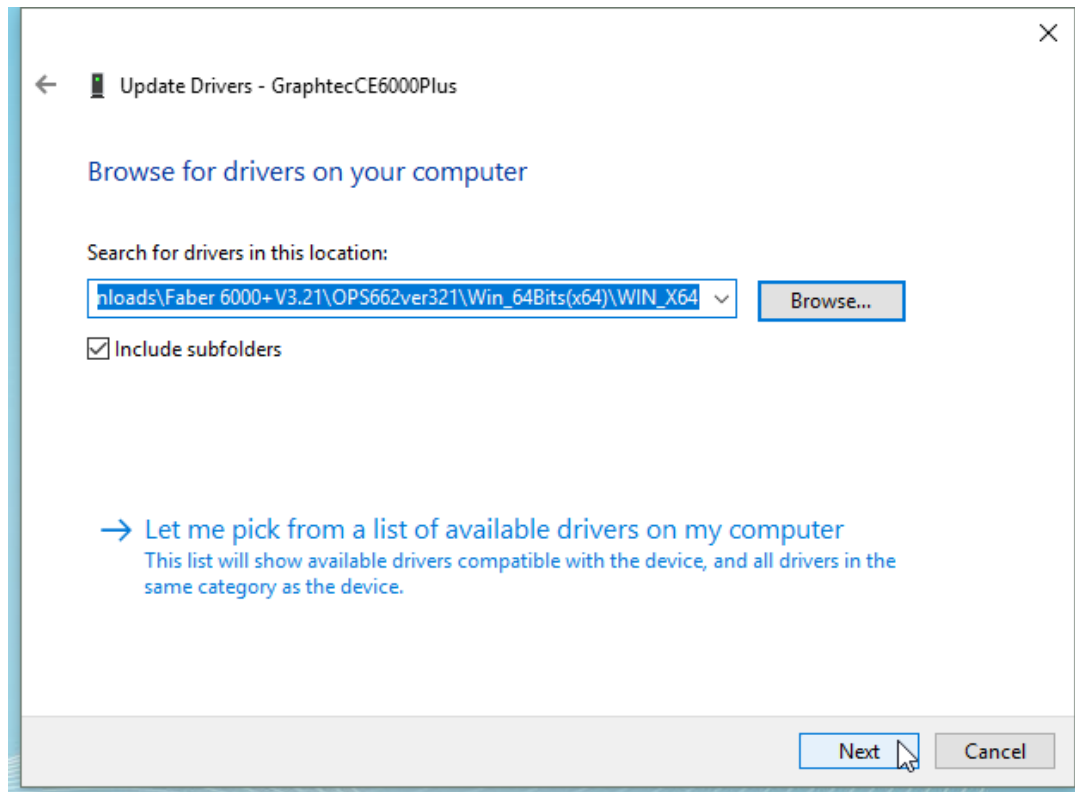
6. If the PC has 32-bit Windows 10, select the folder below and click **OK**.



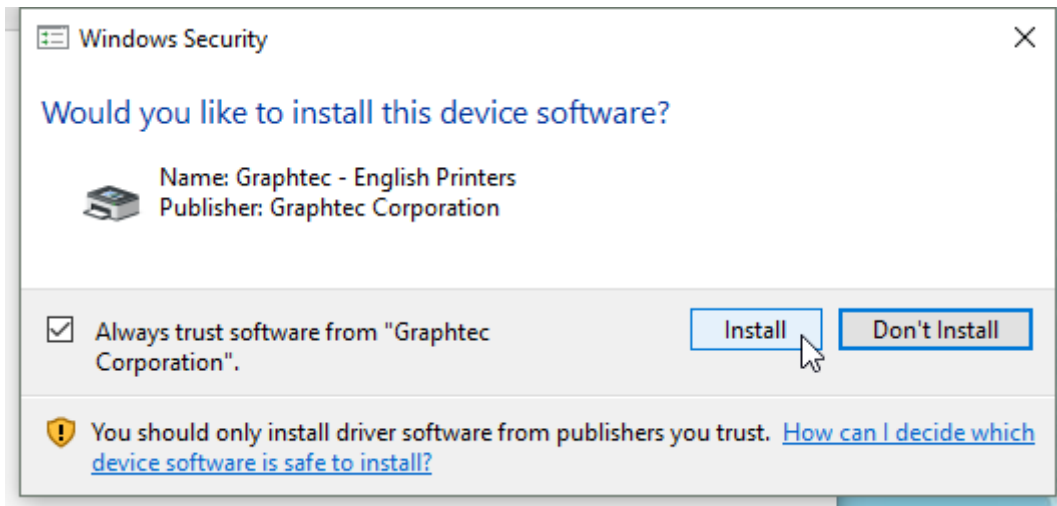
7. If the PC has 64-bit Windows 10, select the folder below and click **OK**.



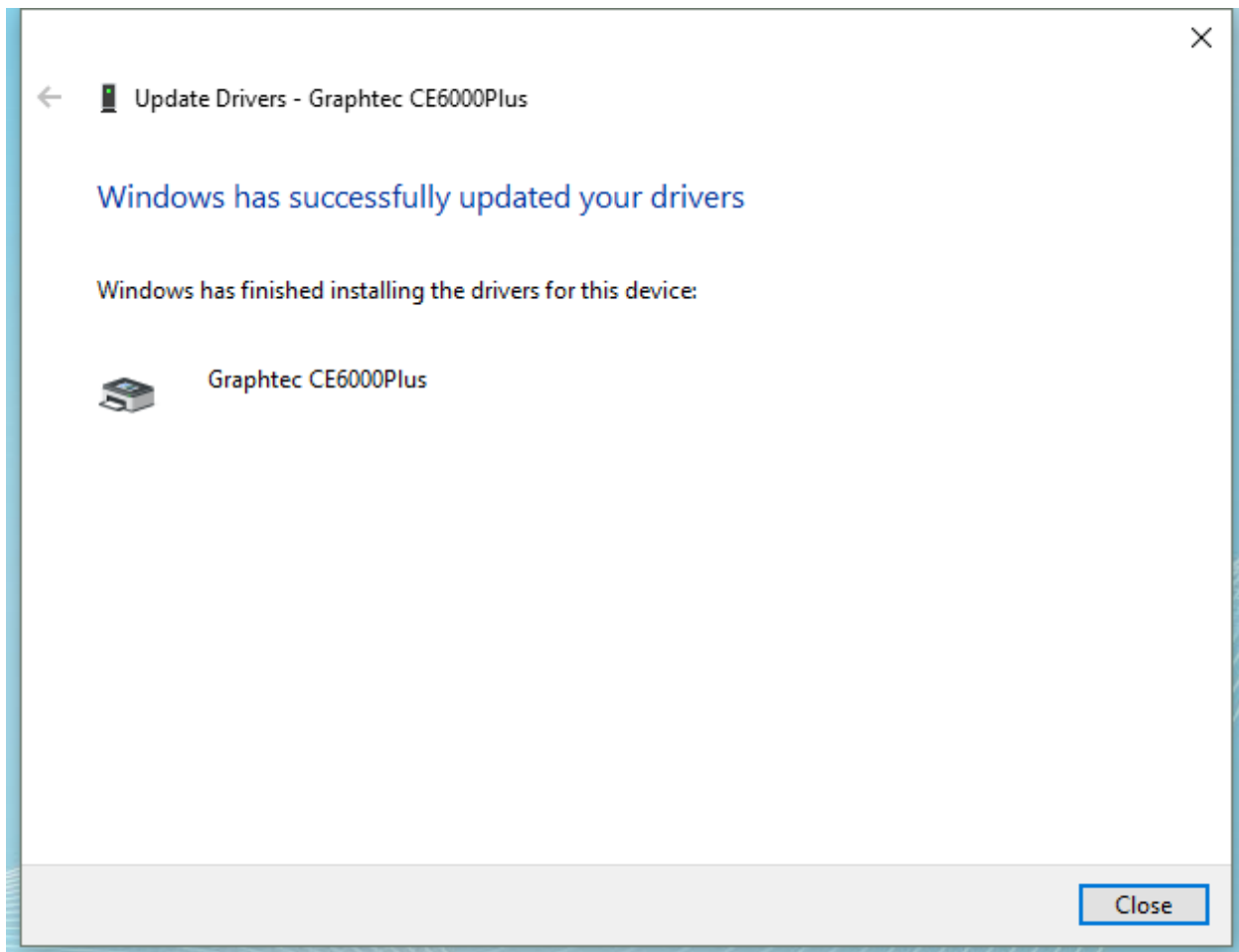
8. Click **Next**.



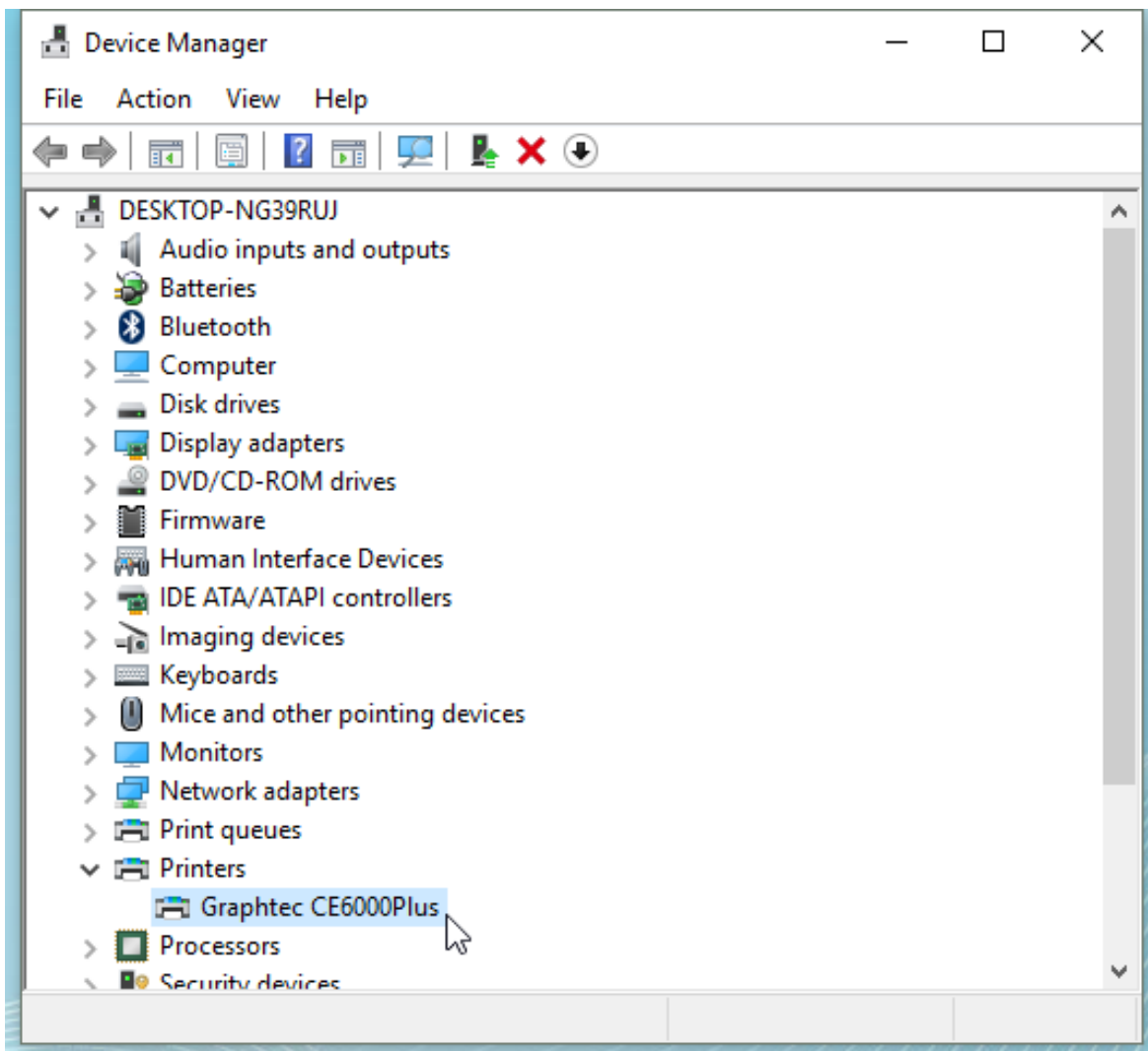
9. Then click **Install**.



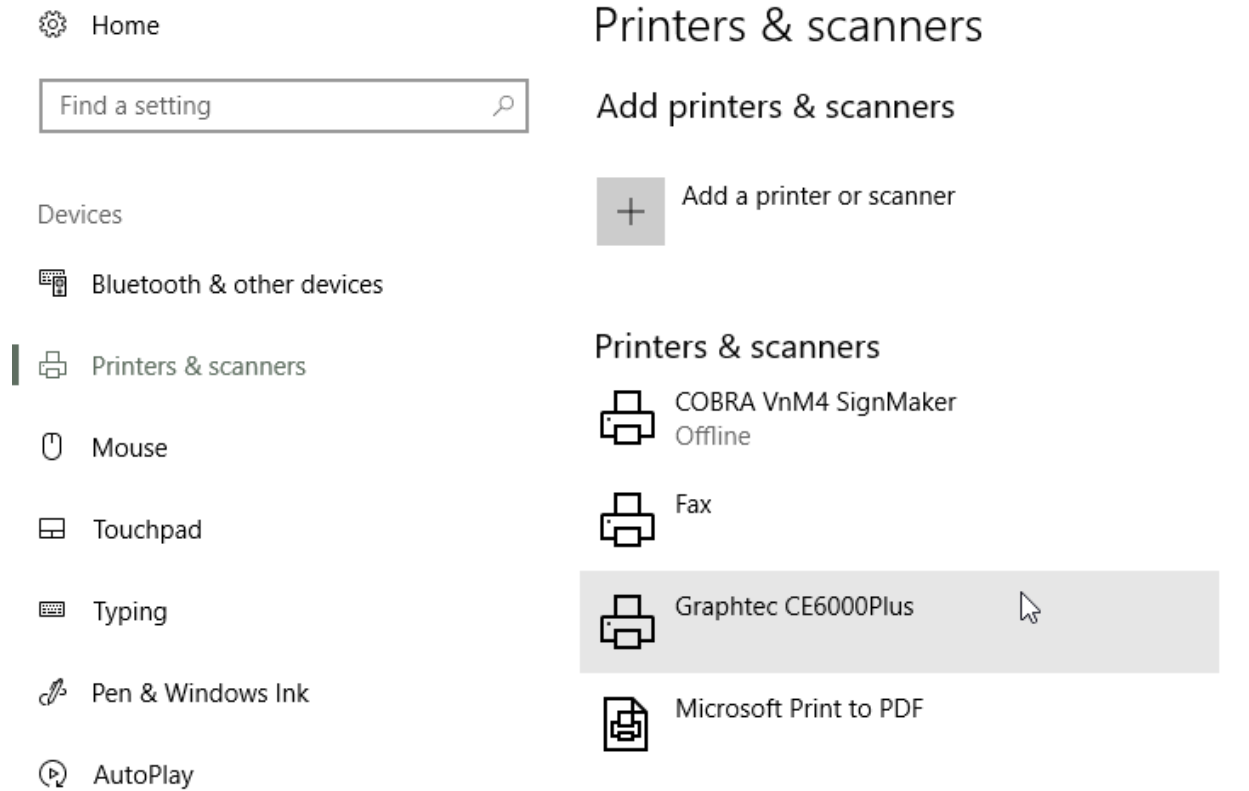
10. If the screen below appears, the driver installation is successful. Click **Close**.



11. Note that in the Device Manager that the plotter is no longer listed as an Other Device, but instead in the Printers category.



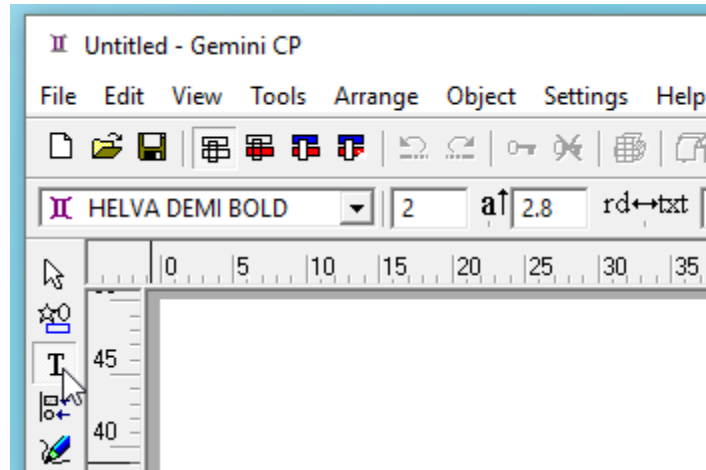
12. Also, it is displayed in the Printers & scanners list.



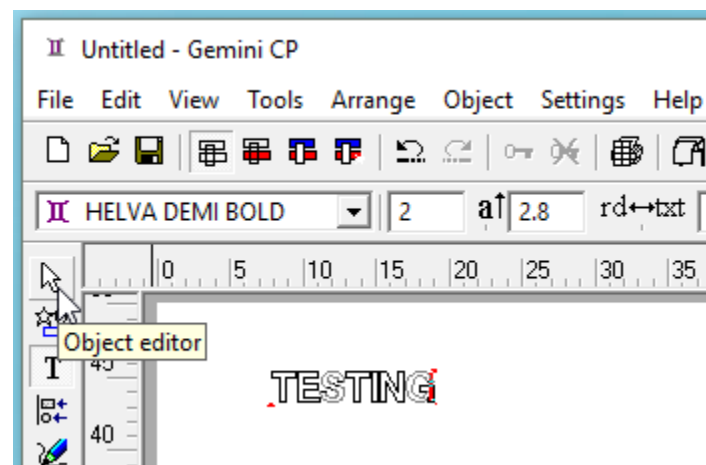
13. This is NOT the end of work instruction. Please continue to the Cutter Configuration section.

Cutter Configuration

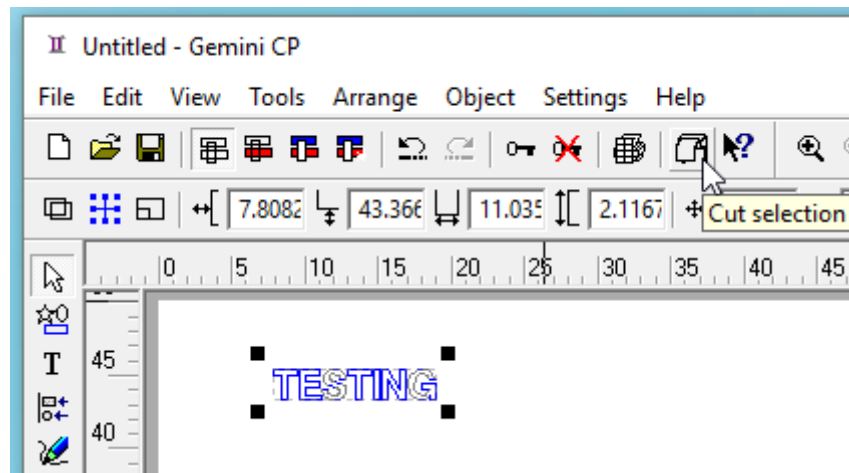
1. Open Gemini CP. Click the **T icon** on the vertical toolbar on the left side of the window. This is the **Text Input** mode.



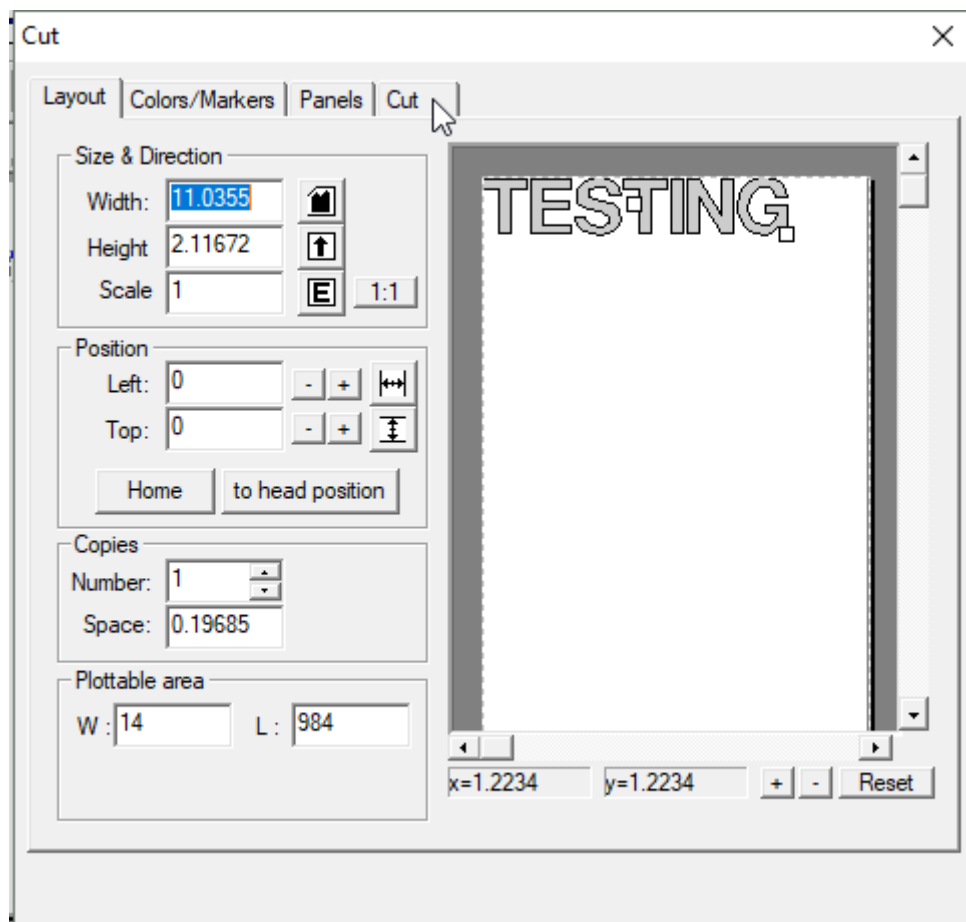
2. Move the mouse cursor into the white workspace and double-click. If done properly, a red text cursor will appear. Type TESTING. Then click the **white arrow icon** that looks like a mouse cursor. This is the **Object Editor** mode.



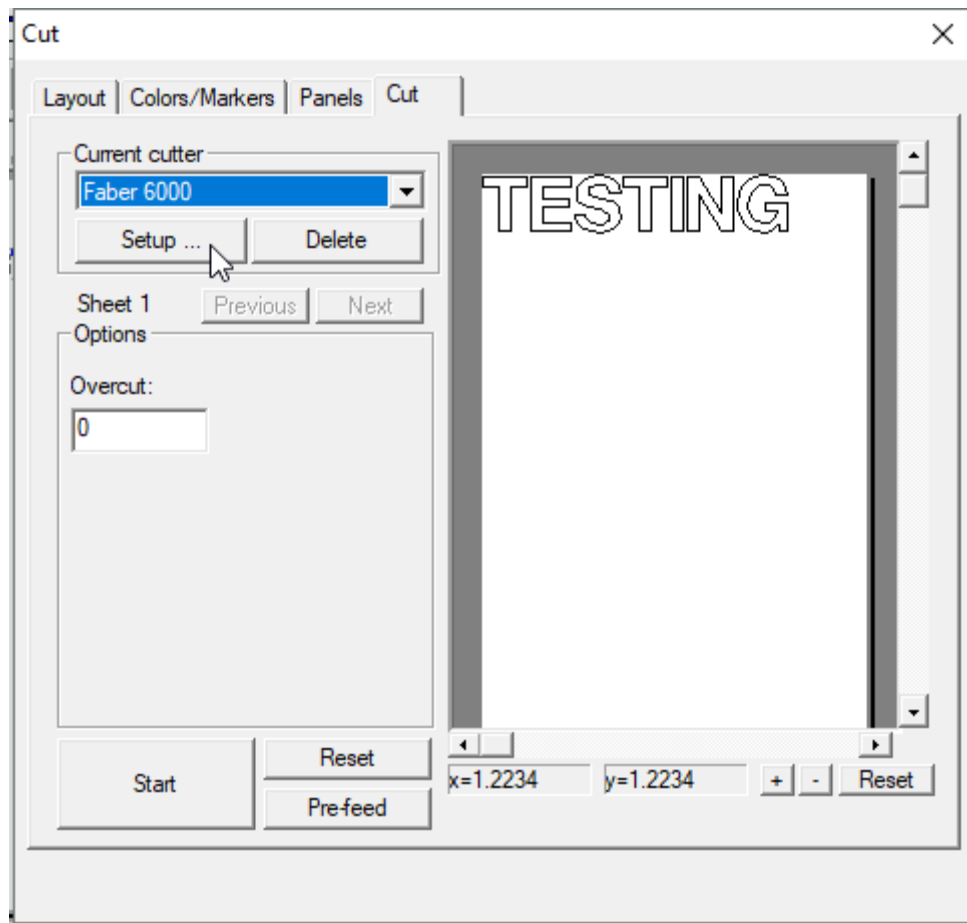
3. Next, click the **Cut Selection** icon in the main toolbar at the top. See below.



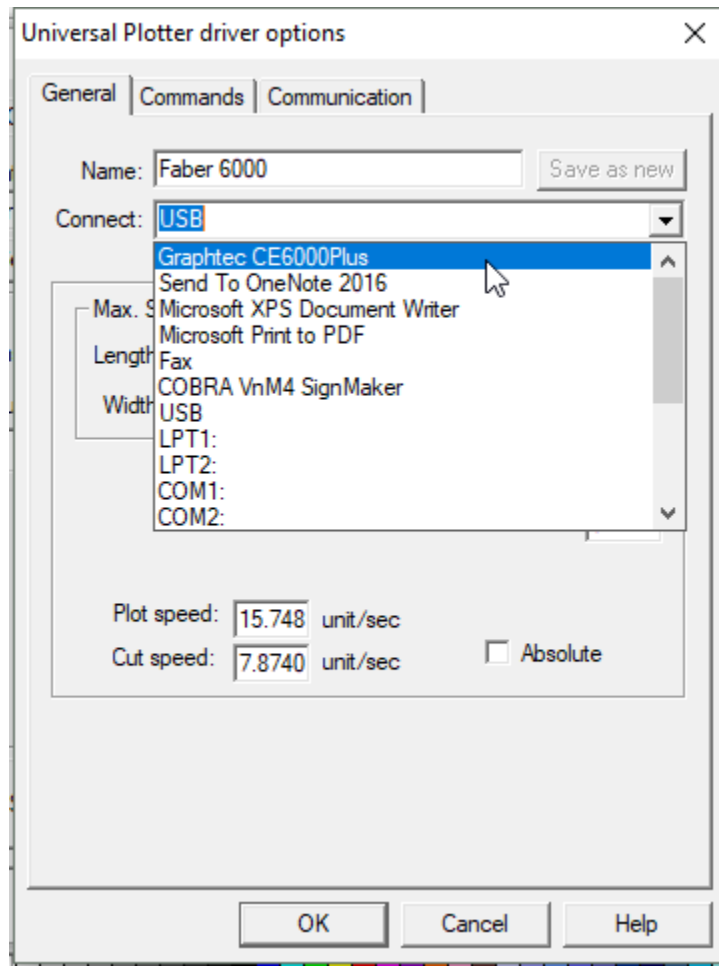
4. In the newly opened window, click the **Cut** tab.



5. On the Cut tab, click **Setup...** below the Current cutter. Please verify that the Current cutter is set to Faber 6000.



- From the Connect drop-down menu, select the option that matches the name listed in Printers. It will either be Graphtec CE6000 or Graphtec CE6000Plus. The driver works for both versions.



- Before verifying that the configuration and driver are properly installed, it's helpful to check that the plotter is currently displaying READY on the LCD. Then click **Start** on the Cut tab. If you experience any errors or problems, please feel free to contact us at 616-583-9400 and ask for technical support. Alternately, you can email us at support@visualworkplaceinc.com.